

STRAPLESS FOUNDATION & DRESS

Advanced Couture Strapless Foundation Project: Fall 2017



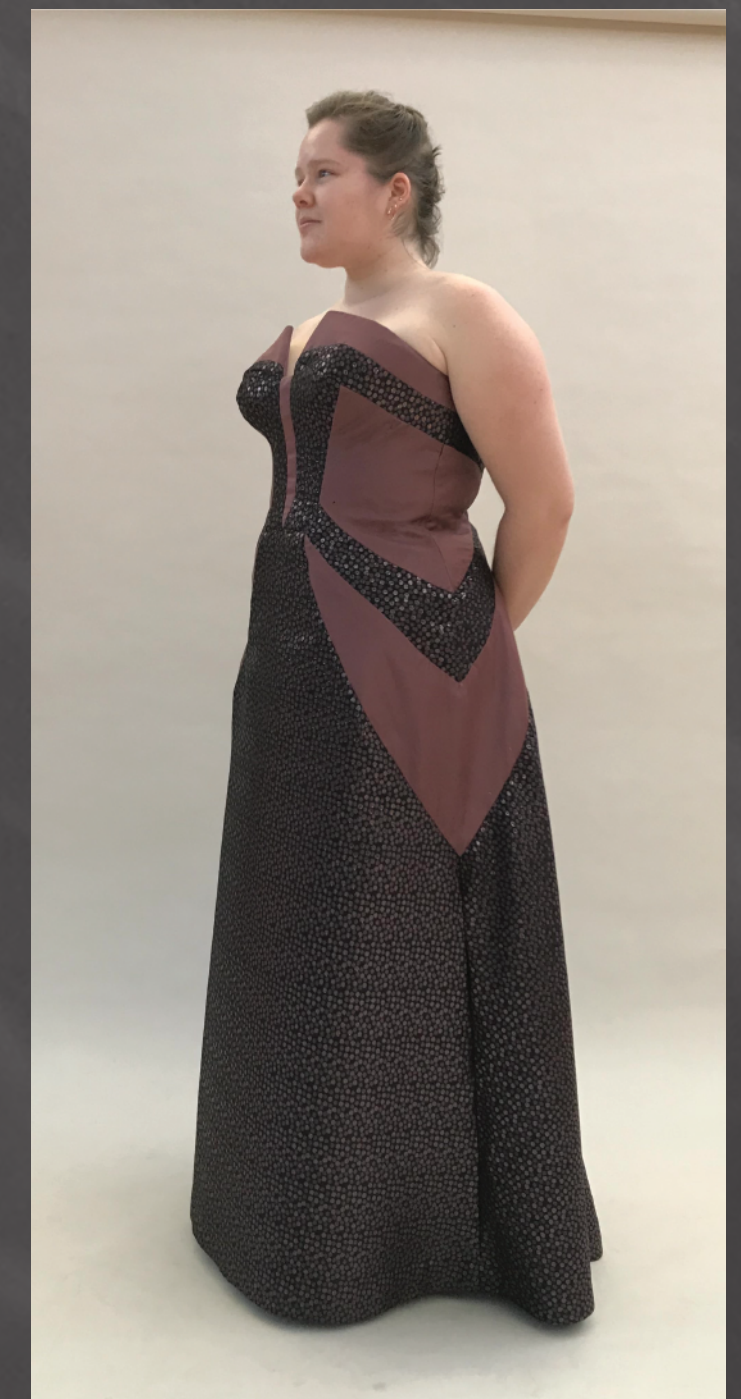
1



2

Started with a number of mock ups of the foundation in order to get the correct bust cup shape (1). All fabric, bone tape, and lace was dyed to match my skin tone (2). Had a fabric fitting of just the foundation before beginning to fit with the dress(3).

Image 4 is of the inspiration for the dress that goes with the foundation. I began draping the shapes with a foundation mock up on a dress form (5)



3



4



5



First mock up of the dress had all the pieces on grain and seams down the side panels (6). In this fitting we discussed the possibility of having the sides of the dress being on the bias. For a second fitting I made these changes to half of the dress to reflect what bias would do (7). I ended up making some of the pieces along the sides on the bias. Flat lined the bodice to smooth out the bones of the foundation.

The lighter fabric of the dress stretched and hung in ways that were unexpected and lead to the some adjustments in the fitting room (8). The final version had the dress attached to the foundation not only at the top but a couple of places in the middle to hold the side panels in place (9).



6



7



8



9